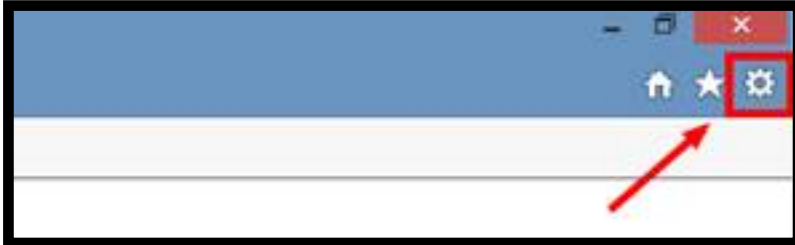


Tips

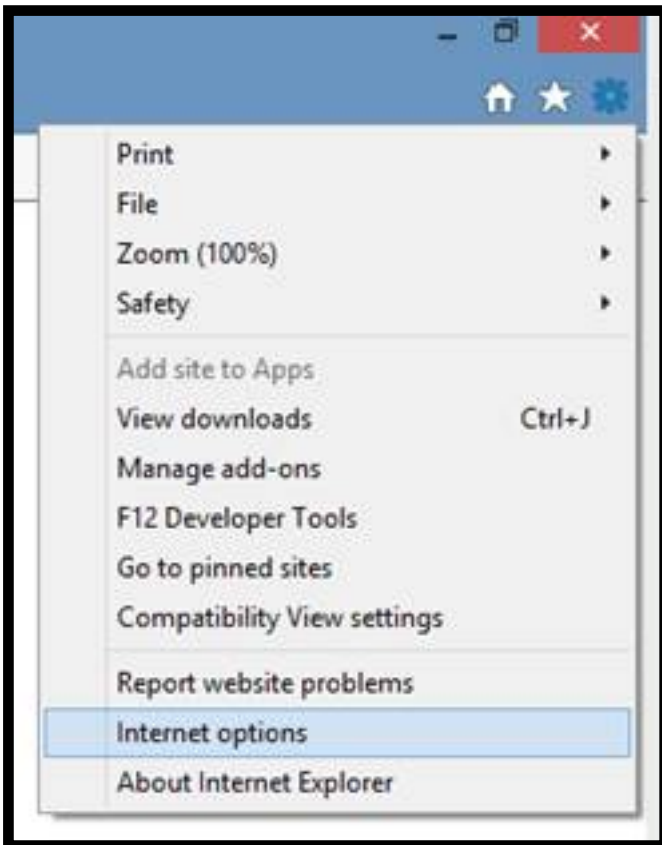
Internet Explorer Security Settings to enabling TLS 1.1 & 1.2 security protocols

Internet Explorer

1. Left-click the gear icon:

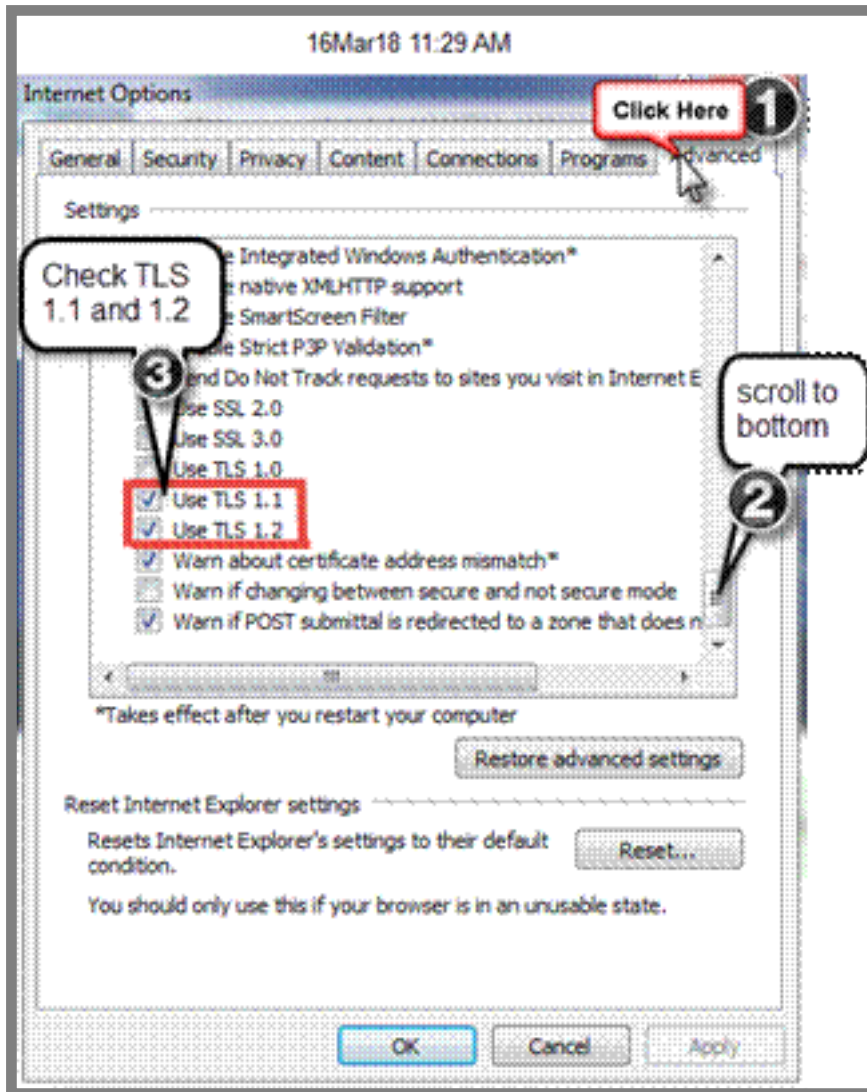


2. Select "Internet options" from the dropdown menu:



Click the "**Advanced**" tab, scroll down and check "**Use TLS 1.1**" and "**Use TLS 1.2**")

Tips



Unique solution ID: #1034
Author: SYM Admin
Last update: 2017-11-27 20:15